

## The New **MultiModemPC** 1200/300 BPS Intelligent Modem Card and Software for the IBM PC™

At office, lab, home, and school, your IBM PC can be more than just a very good personal computer. The new MultiModem PC, from Multi-Tech Systems, connects your IBM PC to the phone lines. And connects you to new worlds of information.

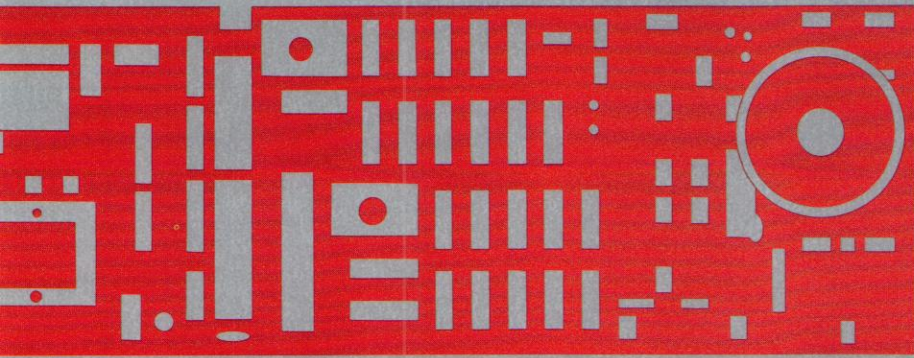
With the MultiModem PC, MultiCom PC software, and your IBM PC, you can go on-line with the popular information utilities. You can access hundreds of databases and services covering business, law, finance, education, engineering, news, shopping, travel. You can download data from the corporate mainframe to the IBM PC at your own desk. You can send or receive memos, letters, files, sales orders.

The MultiModem PC is technically advanced but easy to use. Just slip the plug-in modem card into an expansion slot inside your IBM PC. No serial card or additional software is needed. There's no desktop clutter. And since you dial from the keyboard of your computer, you don't even need a telephone.

Included with the MultiModem PC is your own MultiCom PC software. It will help you out with messages, prompts, and easy-to-understand menu selections. So you can make or break a data-comm connection, or take a call from another modem. So you can send information to another computer. Or receive it. Automatically.

**MultiTech**  
Systems 





### Intelligent Operation.

The MultiModem PC is one of Multi-Tech's new intelligent modems. Its microprocessor design allows the modem to pick out the commands that you and your IBM computer give it, and execute them, effortlessly. And the modem's speaker allows you to monitor calls in progress.

Because it's intelligent the MultiModem PC can perform operations for you automatically. Like automatically dial another modem, using rotary-pulse or Touch-Tone dialing. Like automatically answer incoming calls.

### MultiCom PC Communications Software.

The MultiModem PC's companion software, MultiCom PC, can manage your communications for you. Whether you're in a high-volume, high-speed industry like banking or you're trading game software, MultiCom PC can manage your data files, data communications, and printer.

With MultiCom PC you can access your corporate mainframe, download data, open files and list them on your PC screen or printer. Load the data into a spreadsheet program. Print out your calculations. Then upload your files back to the mainframe, or to another micro.

You can transfer files easily and error-free. MultiCom PC has an error-protection file-transfer protocol, a way for you to verify that the information you send downline is received in just the form you send it.

And MultiCom PC includes a phone directory. You can enter up to 20 phone numbers—up to 39 digits each—along with account number, password, complete log-on commands. Once you've set up the directory, you just key in the choice, and the modem and software will do the rest automatically. (You can even use your IBM PC's internal clock to have your modem make its calls in the middle of the night, while you sleep.) You'll be dialed in, logged-on, and ready to communicate.

Communicate at either 300 or 1200 bits per second. At 300 bps you'll be comfortable keying in on-line responses and reading texts as they scroll down the screen. At 1200 bps you can transfer larger volumes of data quickly. And save on long distance charges.

### So Smart. And So Compatible.

The MultiModem PC and MultiCom PC are a complete communications system designed specially for the IBM PC, as well as IBM PC-compatibles such as those from Compaq, Corona, Columbia, and Eagle. And even though the MultiModem PC hardware comes with its own MultiCom PC software, it will work with any other software designed for the Hayes Smartmodem 1200™ or 1200B™, including Crosstalk XVI, PC-Talk III and Smartcom II™.

So if you want your IBM PC to be more than just a very good personal computer, go with the MultiModem PC. It comes complete with software and a two-year warranty. It'll log you and your IBM PC on to the information age.

### Technical Specifications.

#### MultiModem PC Hardware

Data Format: serial, binary, asynchronous • Data Rate: 1200 bps (+1%, -2.5%) or 0-300 bps • Mode of Operation: 2-wire, half- or full-duplex; auto-originate or auto-answer • Modem Compatibility: Bell AT&T WECO 212A, 103.113 • The MultiModem PC is 100% compatible with all Hayes Smartmodem™ 1200/1200B commands, responses and S-Registers • Intelligent Features: Microprocessor-controlled, with automatic dialing, keyboard dialing, automatic answer, redial, pulse or tone dial, repeat last command, automatic parity and data-rate selection, command-controlled modem options, status messages, several other features • Modulation: 4-level Phase Shift Keyed (PSK) at 1200 bps, Frequency Shift Keyed (FSK) at 300 bps • Character Length, 1200 bps: (7 data bits, 1 or 2 stop bits, odd, even, or fixed parity; or 8 data bits, 1 or 2 stop bits, no parity) • Character Length, 300 bps: 5, 6, 7, or 8 bits (with or without parity, not including start and stop bits) • Carrier Frequencies, 1200 bps: Transmit Originate & Receive Answer—1200 Hz; Transmit Answer & Receive Originate—2400 Hz • Carrier Frequencies, 300 bps: Transmit Originate & Receive Answer—1270 Hz mark,

1070 Hz space; Transmit Answer & Receive Originate—2225 Hz mark, 2025 Hz space • Frequency Tolerance, 300 bps: ±.3% • Transmit Level: -9 dbm • Frequency Stability: ±0.01% (crystal-controlled) • Receiver Sensitivity: -40 dbm (under worst-case conditions) • AGC Dynamic Range: 35 dbm • Receive Data Rate to Terminal: 1219 bps, ±.01% (in high-speed mode) • Power Consumption: 3.3 watts • Operating Temperature Range: 0° to 50° C (32° to 120° F) • Interface: IBM PC or XT expansion bus (62-pin); COM-1/COM-2 standard, COM-3/COM-4 optional • Phone-Line Connectors: two RJ11C jacks, one for line and one for standard telephone set • Phone Line Monitor Speaker: 2-inch cone type • Diagnostics: Local Analog Loopback • Dimensions: 13.37" long x 4.2" high x .9" thick • Weight: 1 lb. • FCC Registration Number: AU792U-69454-DM-E • Ringer Equivalence: 0.3B • Telephone Jack Number: RJ11C or RJ11W • Modem Model Number: MT212PC

#### MultiCom PC Software

Stores 20 or more telephone numbers along with communications parameters, log-on sequences, remote system commands • Single keystroke-controlled data capture onto disk or printer • Stop Start, Send-Line and Error-Detect/Retransmission file transfer protocols • PC clock access for timed, unattended dialing, e.g., batch mode operation • Simultaneous printing and storing of data to disk • Dialing and configuration commands compatible with all other 1200/300 bps MultiModem models as well as Hayes Smartmodem™ 1200 & 1200B • COM-1, COM-2, COM-3 or COM-4 addressing capability • Create, name, print, display and delete files while either off-line or on-line

#### Computer Hardware Requirements

IBM Personal Computer (PC or XT) or 100%-compatible brand • at least 96 Kbytes memory • IBM-DOS 1.1 or 2.0, or MS-DOS 1.1 or 2.0 • display monitor • No serial card is required

**Trademarks** • MultiModem PC, MultiCom PC: Multi-Tech Systems, Inc. • IBM PC: International Business Machines Corp. • Touch Tone: AT&T • Smartmodem 1200, Smartmodem 1200B, Smartcom II: Hayes Microcomputer Products, Inc. • Compaq: Compaq Computer Corp. • Corona: Corona Data Systems, Inc. • Columbia: Columbia Data Products, Inc. • Eagle: Eagle Computer, Inc. • Crosstalk XVI: Microsoft, Inc. • PC-Talk III: Freeware The Headlands Press • MS-DOS: Microsoft Corp.



**MultiTech** Systems

*The right answer every time.*

Multi-Tech Systems, Inc.  
82 Second Ave. S.E., New Brighton, MN 55112  
(612) 631-3550, TWX: 910-563-3610